



SPOTSYLVANIA GREENWAYS INITIATIVE

Building Trails... Building Connections

Virginia Central Railway

Spotsylvania

2.1 miles one way / asphalt

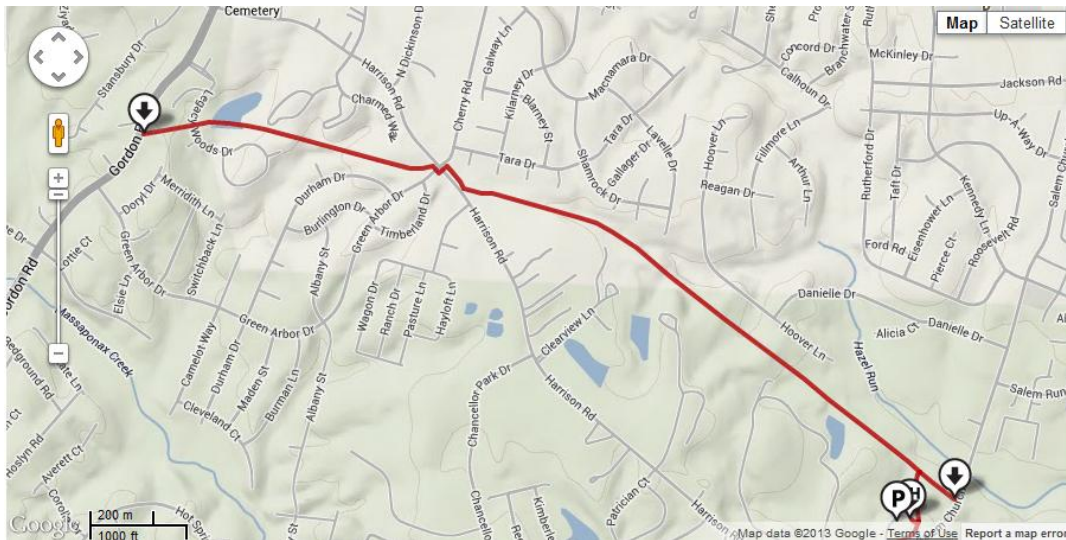
Bike / Wheelchair Accessible / Walk



Trail Head(s):

Enter the Harrison Road Convenience Center at 5917 Harrison Road, Fredericksburg VA 22407, and turn right toward the ball fields at the top of the hill. The trailhead is at the far end of the parking lot.

Map:



NOTES:

On February 2, 1850, the Louisa Railroad, having expanded greatly since its beginnings in [Louisa](#) and Hanover counties, was renamed as the Virginia Central Railroad. Many years after the original Virginia Central became part of the Chesapeake and Ohio in 1868, another railroad between [Fredericksburg](#) and [Orange](#) used the name "Virginia Central." The [Potomac, Fredericksburg & Piedmont Railroad Company](#) (PF&P) operated 38 miles (61 km) of 3-foot (910 mm) gauge railroad between Fredericksburg (with a connection to the [RF&P Railroad](#)) and Orange (with a connection to the [Orange & Alexandria Railroad](#)). It operated as [narrow gauge](#) until 1926, when the line was standard gauged and the name changed to the Virginia Central Railway. In 1938, the entire line was abandoned except for a 1 mile (1.6 km) segment in Fredericksburg which lasted until 1983